



# Vibes

MARKETING & SERVICES (P) LTD



## WATER PROOF LAMP WITH SHOCK PROOF, HEAT RESISTANT BOROSILICATE GLASS PROTECTION



CFLB-9



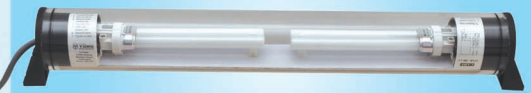
CFLB-14e



CFLB-18



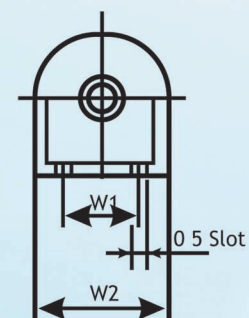
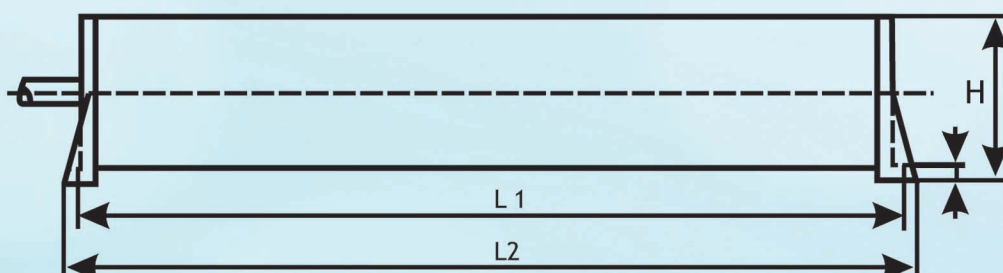
CFLB-36



CFLB-9X2

- CARE Waterproof Lamps are totally enclosed in thick walled shock resistant Borosilicate Glass Tube
- Designed to withstand hostile working atmosphere encountered in machine tool, process industry, dairy units, outdoor applications etc.
- These lamps are resistant to dust, coolant and hot chips. High efficiency CFLs are used for high energy efficiency and low heat generation.
- All lamps are normally supplied with tubes fitted and chokes for external mounting except model CFLB-14e, Model CFLB 14e uses a Philips 14 watt tube with integral electronic choke and so separate ballast not required
- Standard wire length is 2 meters, but lamps with longer wire length can be supplied according to requirement at extra cost.

Model No	Light Source	Choke	Length (mm)		Height (mm)	Width (mm)	
			L1	L2		W1	W2
CFLB 9	CFL Lamp 9 Watt, Colour 86, Rated Lumen – 600	Copper Choke, Externally Mounted	318	330	65	35	60
CFLB 14e	CFL Lamp 14 Watt, Colour 86, Rated Lumen – 800	Integral Choke With Lamp	318	330	65	35	60
CFLB 18	CFL Lamp 18 Watt, Colour 86, Rated Lumen – 1200	Copper Choke, Externally Mounted	318	330	65	35	60
CFLB 36	CFL Lamp 4 Pin 36 Watt, Colour 86 Rated Lumen – 2900	Electronic Choke, Externally Mounted Industrial Quality Choke, Externally Mounted	558	570	65	35	60
CFLB 9X2	CFL Lamp 9 Watt, Colour 86, Rated Lumen – 600 (9 W x 2 Lamps)	Copper Choke, Externally Mounted (2 Nos, Separate for Each Lamp)	468	480	65	35	60





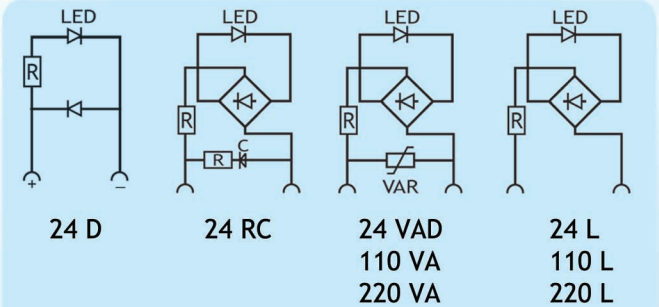
## SURGE SUPPRESSORS FOR SOLENOID VALVES



CARE Surge Suppressors and Indicators for AC/DC Solenoid Coils for Hydraulic / Pneumatic Valves with plug-in connectors conforming to DIN 43650 types A & B.

Protects the CNC / PLC systems from noise during solenoid operation. Bright LED indication when solenoid is energized. No additional wiring or soldering required. Protects against high voltage transients in power supply. Improves relay contact life.

Model	Description
24D	LED + Diode - polarity dependant, for 24 V DC only
24RC	LED + RC - for 24 V AC/DC
24 VAD	LED + MOV - for 24 V AC/DC
110 VA	LED + MOV - for 110 V AC
220 VA	LED + MOV - for 220 V AC
24 L	Indicator without suppressor for 24 volt
110 L	Indicator without suppressor for 110 volt
220 L	Indicator without suppressor for 220 volt



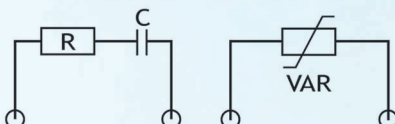
## CONTACTOR COIL SUPPRESSORS



CARE Contactor Coil Suppressors ensure trouble free operation of machines and control systems, the need to suppress harmful voltage surges - transients - produced when motors, contactors and other inductive loads are switched off, is well accepted.

CARE contactor coil surge suppressors are available in varistor based, RC based and diode based types.

Model	Description
10 RC 22	RC based suppressor for 24 volt AC/DC systems
C 13014	Varistor based for 110 volt contactor coils
C 24014	Varistor based for 220 volt contactor coils
CS 503	Diode based for 24 volt DC systems
DIN rail adaptors are available for all models	





## MOTOR SUPPRESSORS



### MODEL M44020X3

CARE M44020X3 is a Varistor bases Motor Suppressor. Three varistors interconnected in delta formation with flying leads 25 cm long. Standard supply is with varistor RDN 440/20. Units with higher voltages can be supplied on request. Suitable DIN rail adaptors also available



### MODEL UMCS-102

CARE UMCS-102 is a RC based Motor Suppressor. Piggyback motor transient suppressor for mounting under contactor, star connected Resistance Capacitor units with 25 cm long leads. Capacitor rating 0.47 mfd 1000 V DC and resistance 220 ohms, 5 watt wire wound type.



**Vibes**  
MARKETING & SERVICES (P) LTD

**VIBES MARKETING & SERVICES (P) LTD**

1st Floor, Lalitha Bhavan, Manikkiri Road  
Kochi, Ernakulam - 682 016, Kerala, INDIA

**Phone:** +91-0484-2357209, +91-0484-4030663

**Fax :** +91-0484-2357209, +91-0484-4030663

**Email:** vibesmark@gmail.com, **Website:** www.vibesmark.com